

Broome County Local Waterfront Revitalization Program

PUBLIC WORKSHOP

February 22, 2021

NATIONAL FIRM. STRONG LOCAL CONNECTIONS.



The background of the slide is a photograph of a calm lake reflecting a dense forest of evergreen trees. The sky is blue with some light clouds. The water is very still, creating a clear mirror image of the trees and sky. In the foreground, some dark, out-of-focus branches are visible on the left and right sides.

01

Project Overview

02

LWRP Process

03

Key Findings & Opportunities

04

Next Steps

05

Interactive Exercise



01

PROJECT OVERVIEW



BERGMANN
ARCHITECTS ENGINEERS PLANNERS

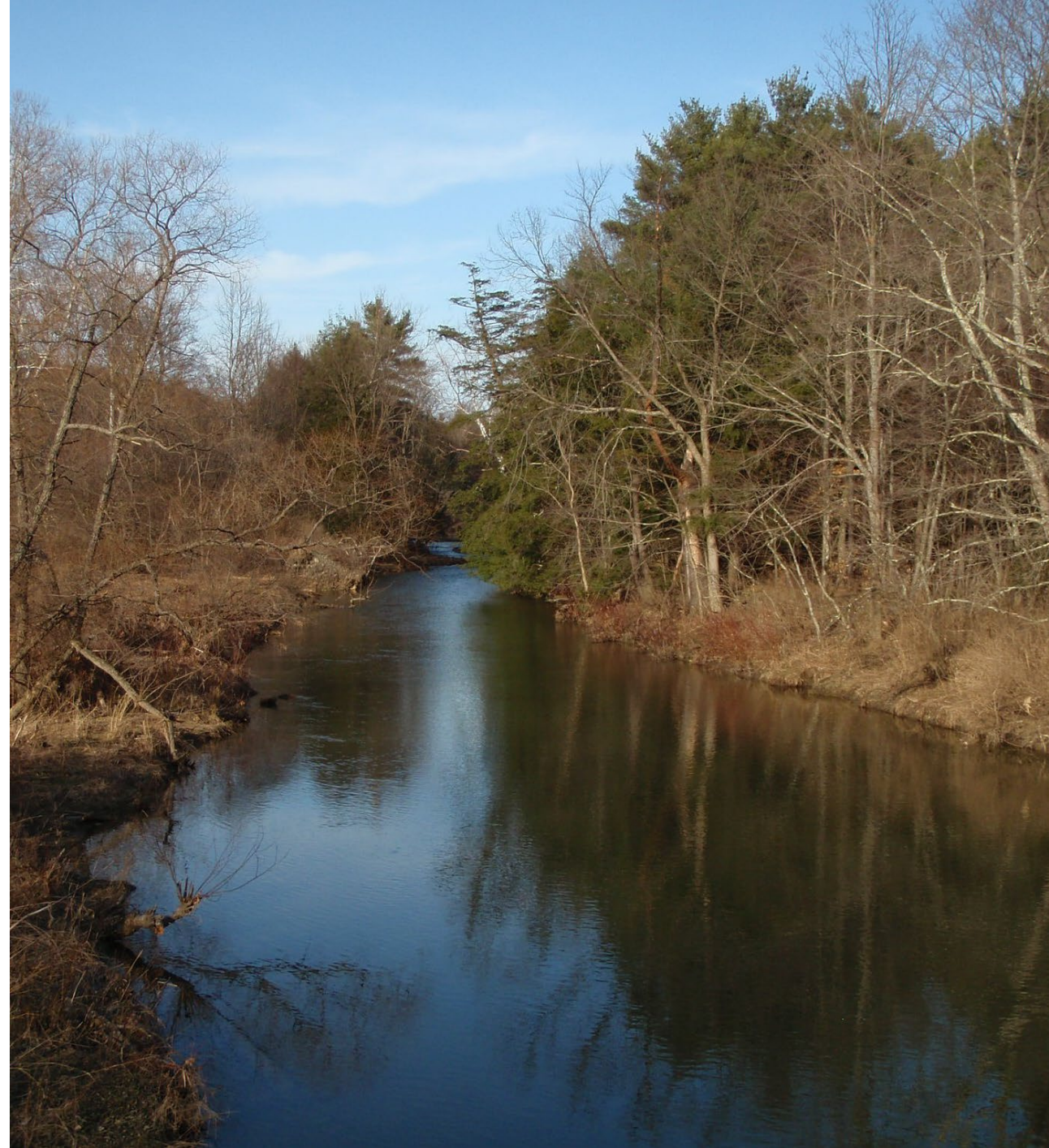
WHAT IS A LWRP?

- NYS Department of State funded program
- More than a plan, is part of a larger "program"
- Establishes consensus on preferred future land and water uses
- Identifies vision for waterfront and a means to achieve that vision



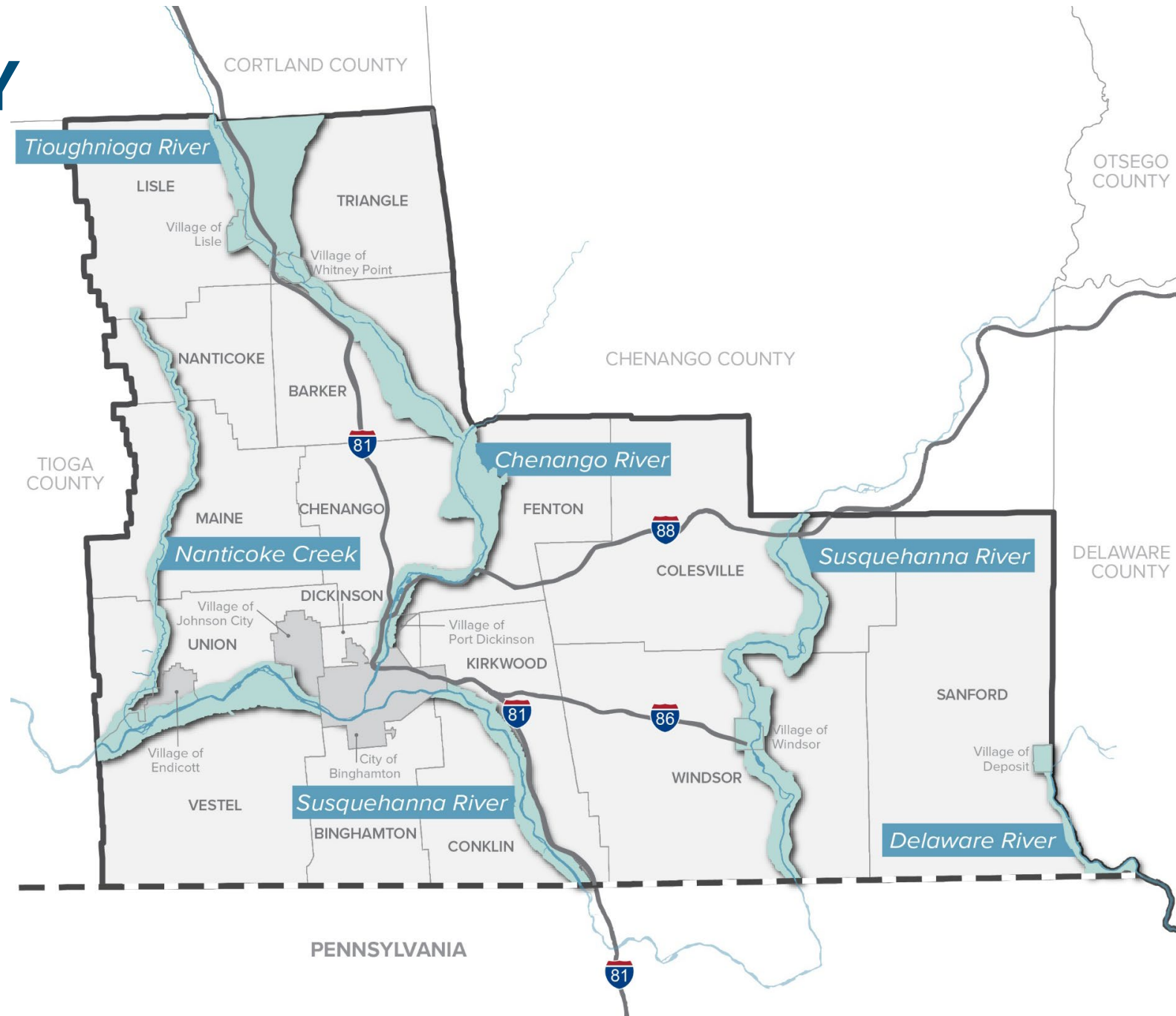
BENEFITS OF A LWRP

- Provides a clear direction for appropriate waterfront development
- Increases opportunities to obtain public and private funding for future projects
- Establishes long-term partnership between multiple levels of government
- Aligns local, state and federal actions



LWRP BOUNDARY

- 22 Municipalities
- 6 Designated Inland Waterways
- 40,000+ acres
- 186 miles of water frontage



PROJECT TEAM

New York State
Department of State

Waterfront Advisory
Committee

Broome County

Municipal Leaders

Community Members



BERGMANN

ARCHITECTS ENGINEERS PLANNERS





02

LWRP PROCESS



BERGMANN
ARCHITECTS ENGINEERS PLANNERS

OVERVIEW



STEP 1. LOCAL COMMITMENT & CONSULTATION

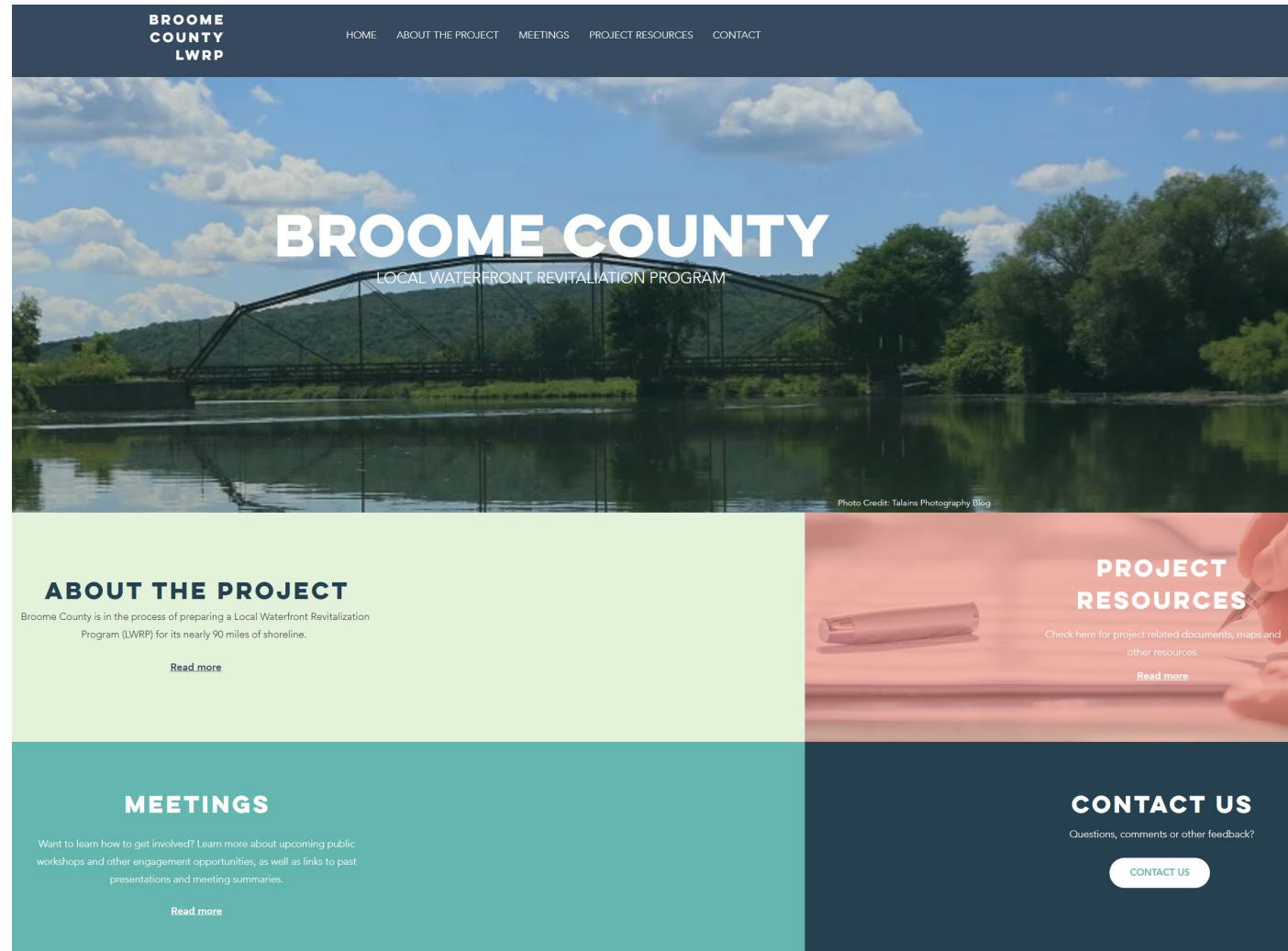
- Waterfront Advisory Committee
- Municipal Interviews
- Focus Group Meetings
- Public Workshops



STEP 1. LOCAL COMMITMENT & CONSULTATION

Project Website

www.broomewaterfront.com



STEP 2. INVENTORY & ANALYSIS

- Comprehensive Assessment of the Waterfront Revitalization Area (WRA)
- Builds on Existing County and Local Planning Efforts



STEP 3. POLICIES & PROGRAMS

Policies are enforceable statements of action that support the goals of the LWRP

- Balance economic development and preservation of natural resources
- Guide actions at all government levels to ensure “consistency” and coordinated decision-making
- Adapt State coastal policies to meet local needs and objectives

TEN STATE-DEFINED SUBJECT AREAS

- Development
- Fish and Wildlife
- Flood and Erosion Hazards
- Public Access
- Recreation
- Historic and Scenic Resources
- Agricultural
- Energy
- Water and Air
- Wetlands

STEP 4. DEFINING LOCAL & REGIONAL PROJECTS

- Private Sector Projects
- Trails and Connections
- Water Access
- User / Visitor Amenities
- Public Spaces
- Interpretation
- Infrastructure
- Flood Protection



STEP 5. IMPLEMENTING THE LWRP

- **Local Waterfront Consistency Review Law**
- **Zoning** updates
- **New Regulations** potentially needed
- **Other** public & private actions
- **Local Management Structure** to support consistency review
- **Financial Resources** needed to implement LWRP





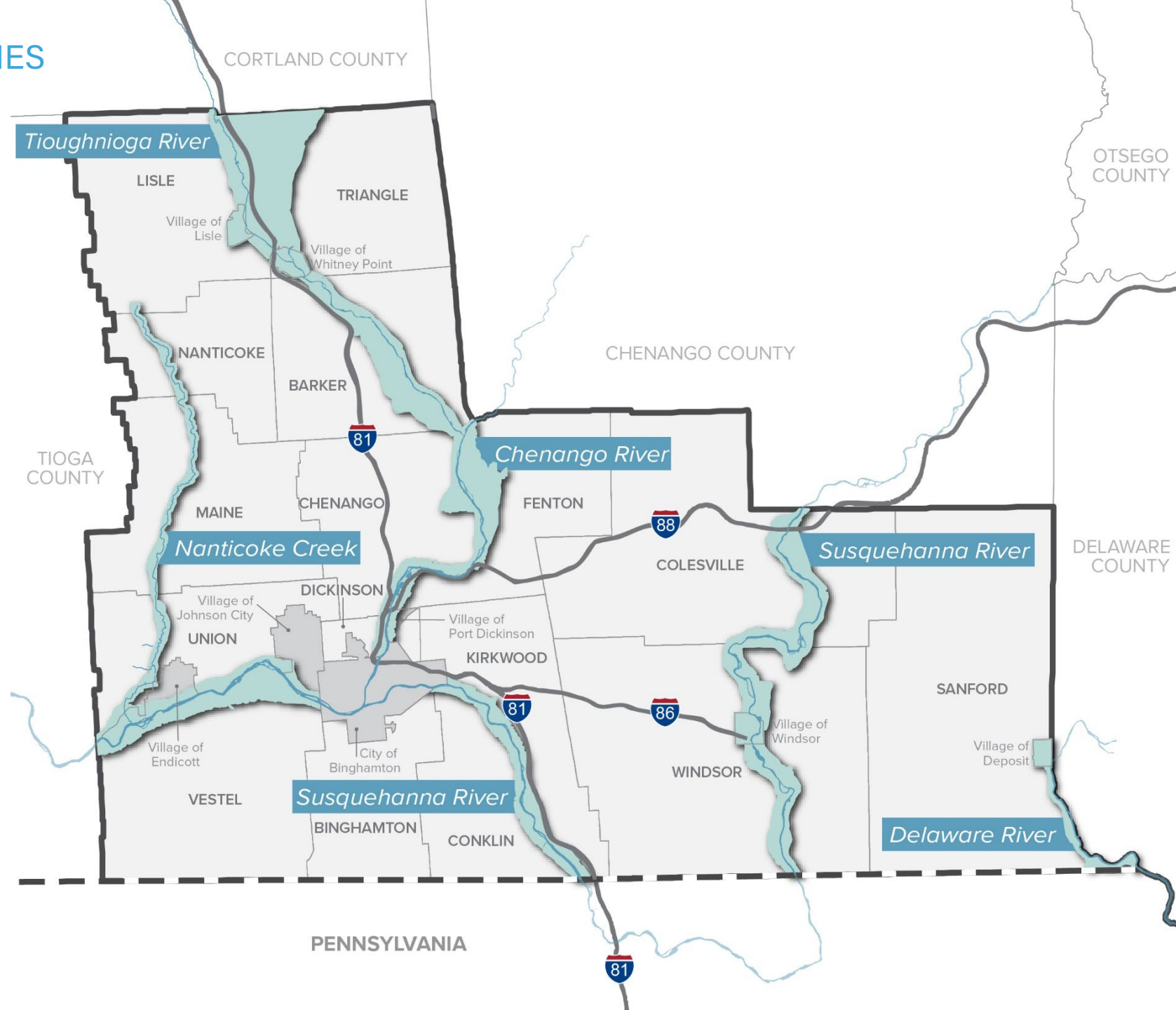
03

KEY FINDINGS & OPPORTUNITIES



BERGMANN
ARCHITECTS ENGINEERS PLANNERS

- Past Planning Efforts
- Inventory & Analysis
- Municipal Interviews



BUILDING ON EXISTING INITIATIVES

Builds on the **2011 Intermunicipal Waterfront Public Access Plan** and advances the priorities of several recent county-wide plans:

Comprehensive Plan Update (2020)

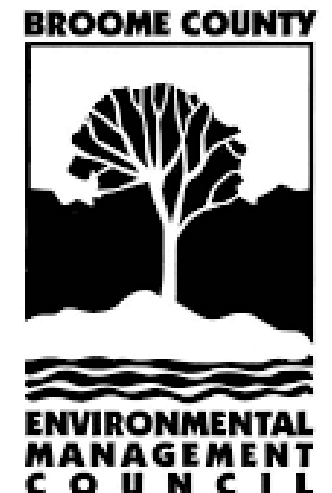
Agricultural Economic Development Plan (2019)

Hazard Mitigation Plan (2019)

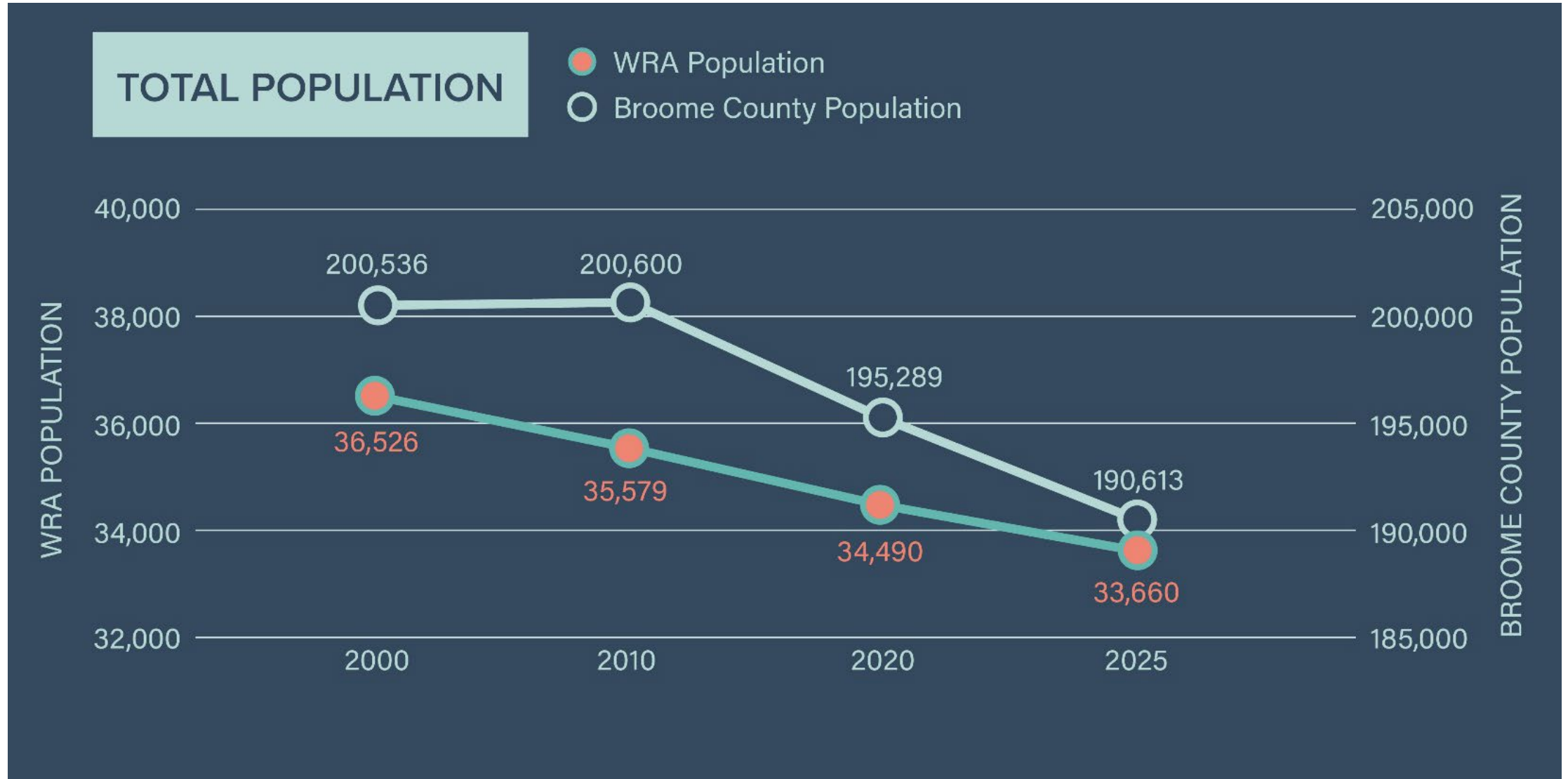
Natural Resources Inventory (2019)

Parks Plan (2019)

NY Rising Community Reconstruction Plan (2014)



COMMUNITY SNAPSHOT

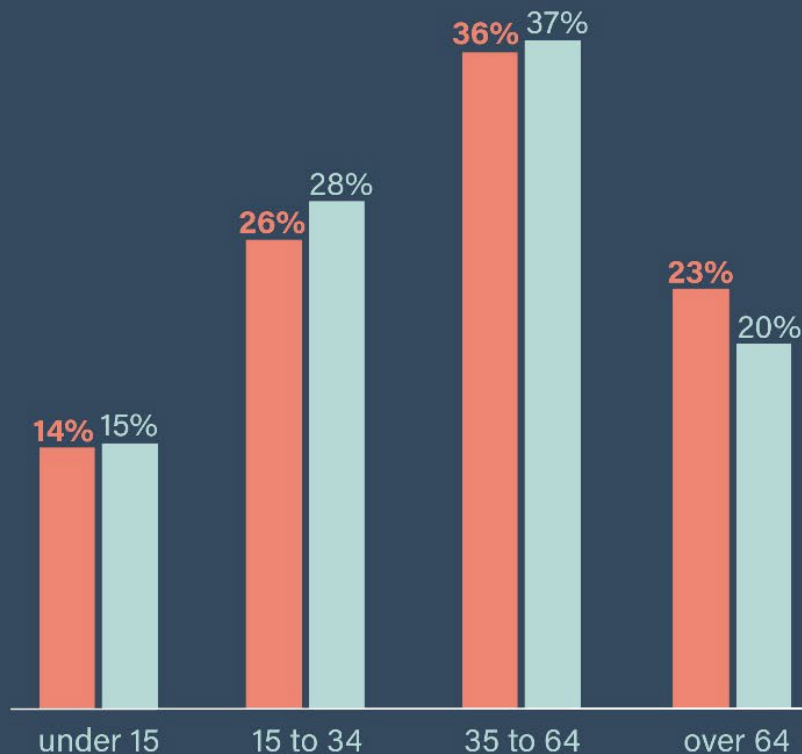


COMMUNITY SNAPSHOT

POPULATION BY AGE (2020)

percent of total population

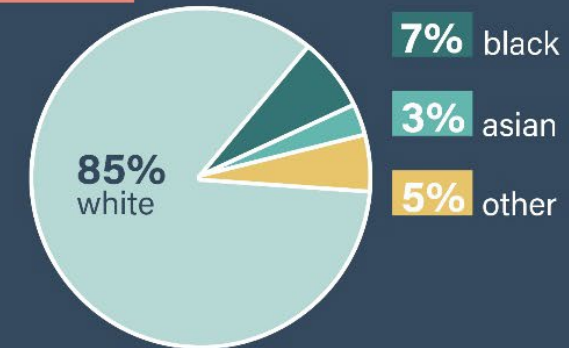
WRA Broome County



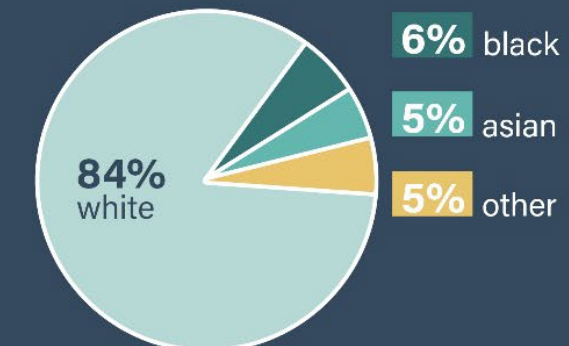
POPULATION BY RACE (2020)

percent of total population

WRA



Broome County



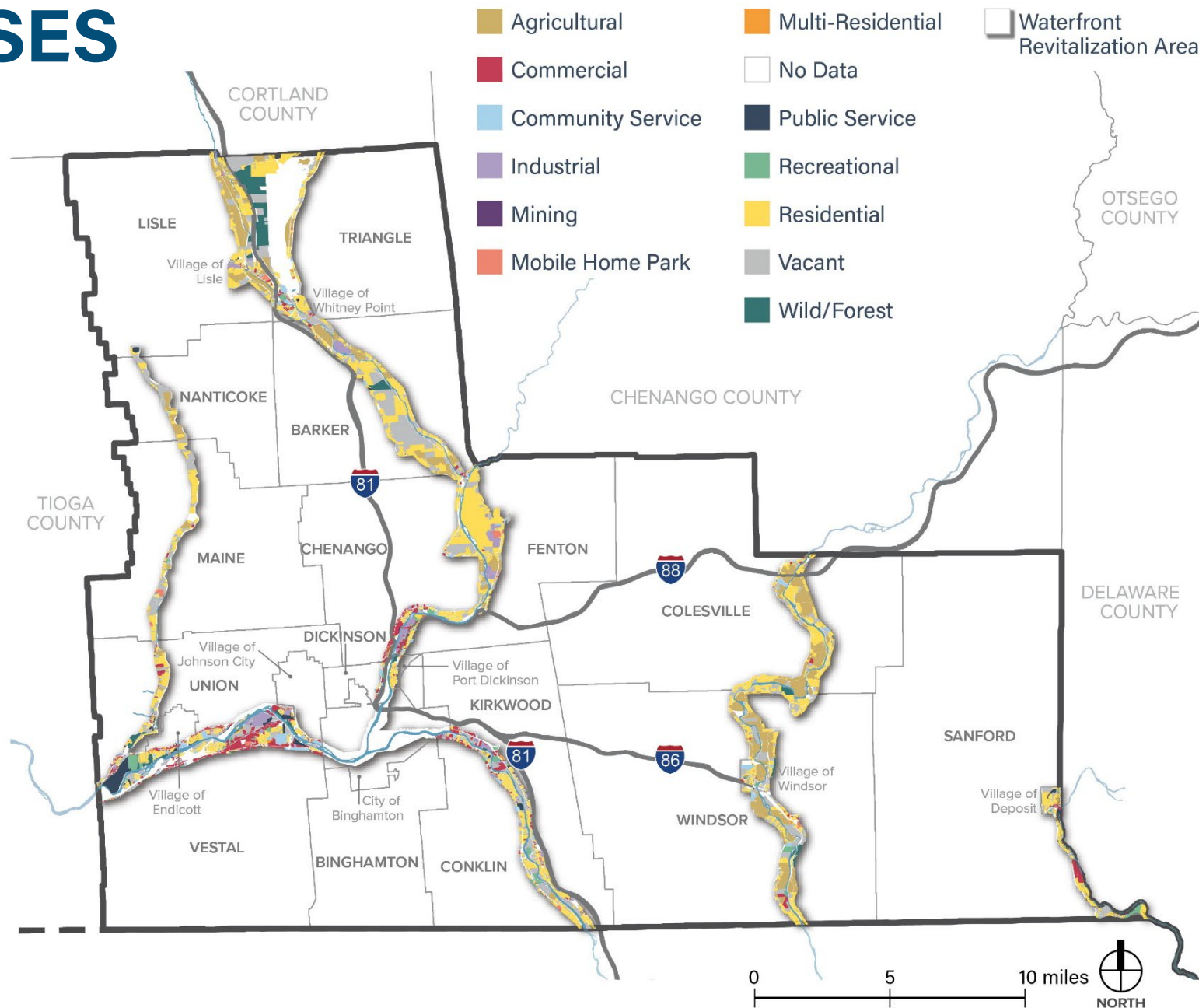
DIVERSE LAND USES

The most common land uses in the WRA are...

Single-Family Residential

Vacant

Agricultural



PUBLICLY OWNED LAND

5,307 acres (16% of WRA) of Publicly-Owned Land

Municipally-Owned

1,199 acres (23% of public land)

County-Owned

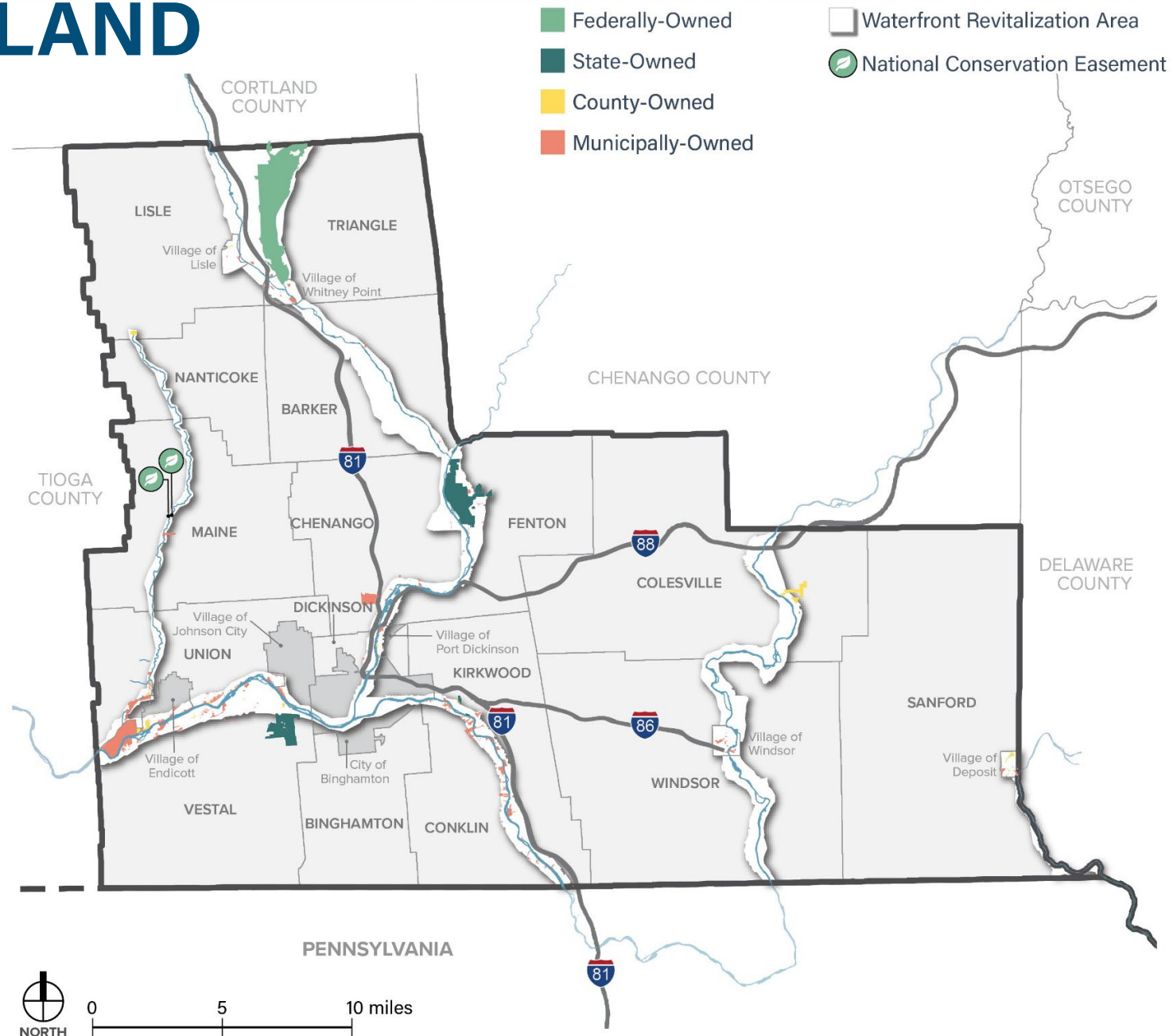
161 acres (3% of public land)

State-Owned

1,115 acres (21% of public land)

Federally-Owned

2,832 acres (53% of public land)

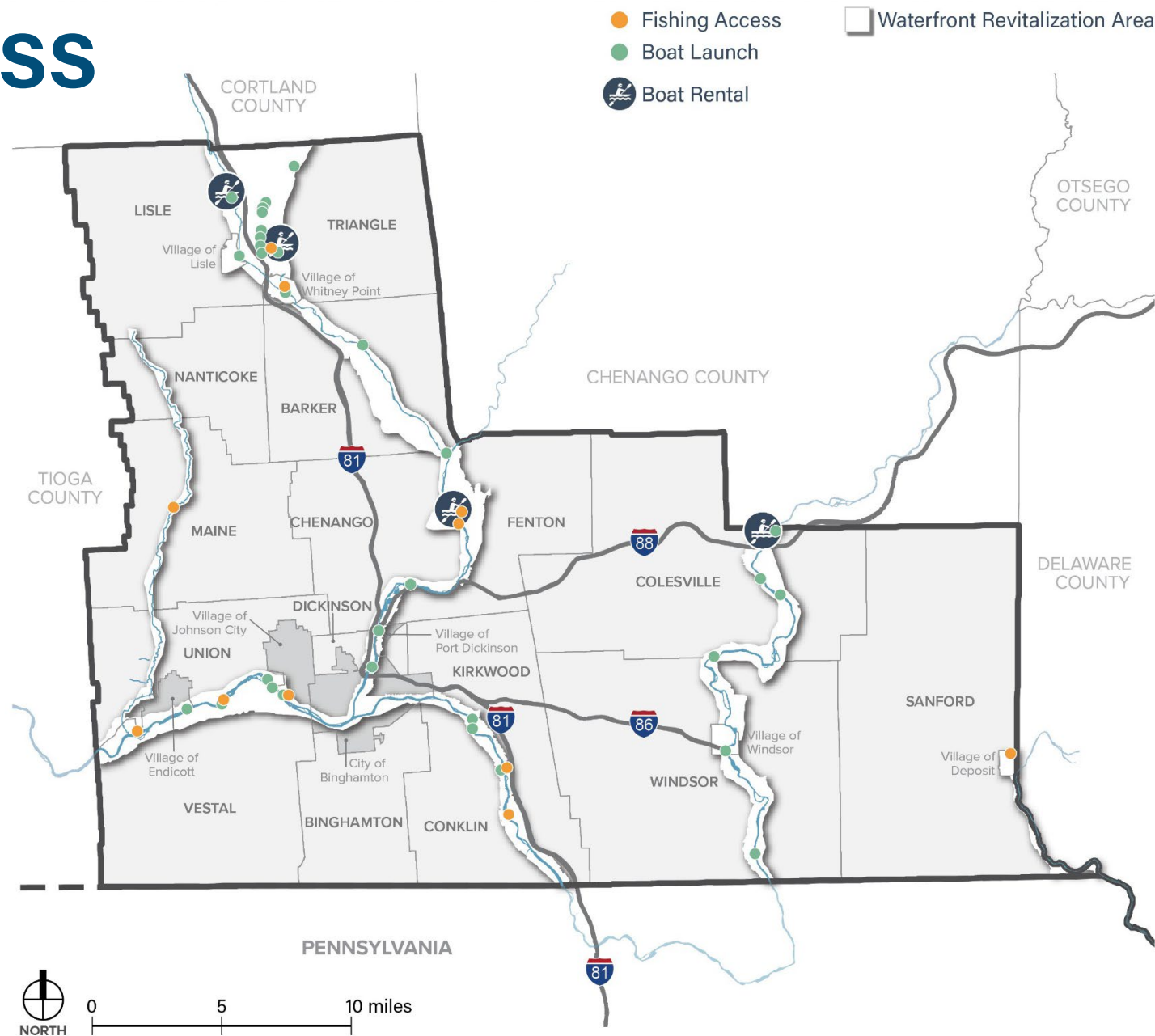


WATERFRONT ACCESS

33 Public Boat Launches

11 Public Fishing Areas

3 Boat Rentals



ABUNDANT NATURAL RESOURCES

■ NYS Protected Areas

□ Waterfront Revitalization Area

4,710 acres (14% of WRA) of NYS Protected Areas in the WRA

Areas that are legally recognized by New York State as essential for biodiversity conservation and the protection of endangered or threatened species

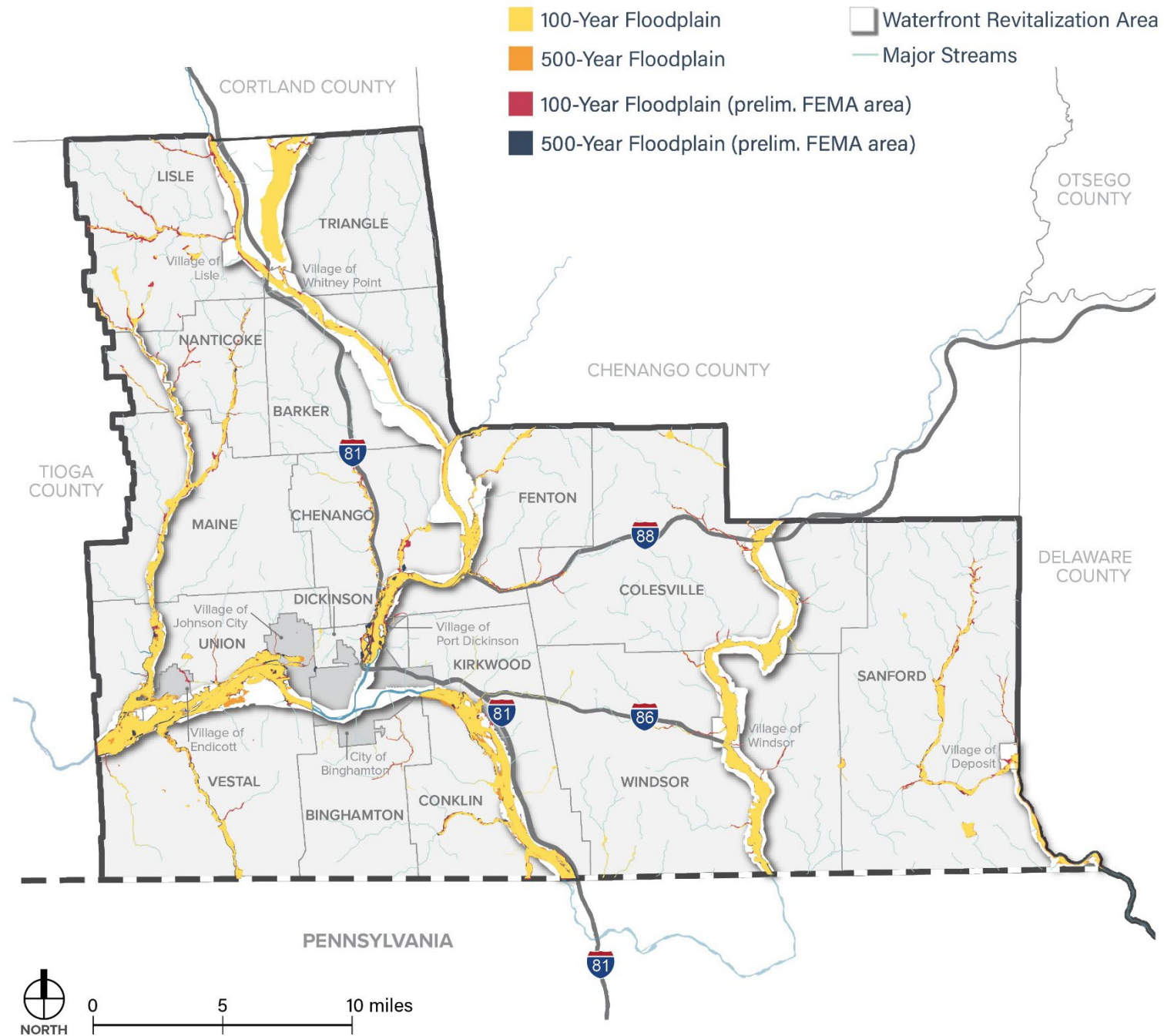
- 1 Whitney Point Reservoir
- 2 Chenango Valley State Park
- 3 Otsiningo County Park



The Susquehanna River Basin is One of the Most Flood-Prone Regions in the Nation

2 Federal Disaster Declarations due to flooding in Broome County in 2006 and 2011

24 Flood Control Structures owned and maintained by the County

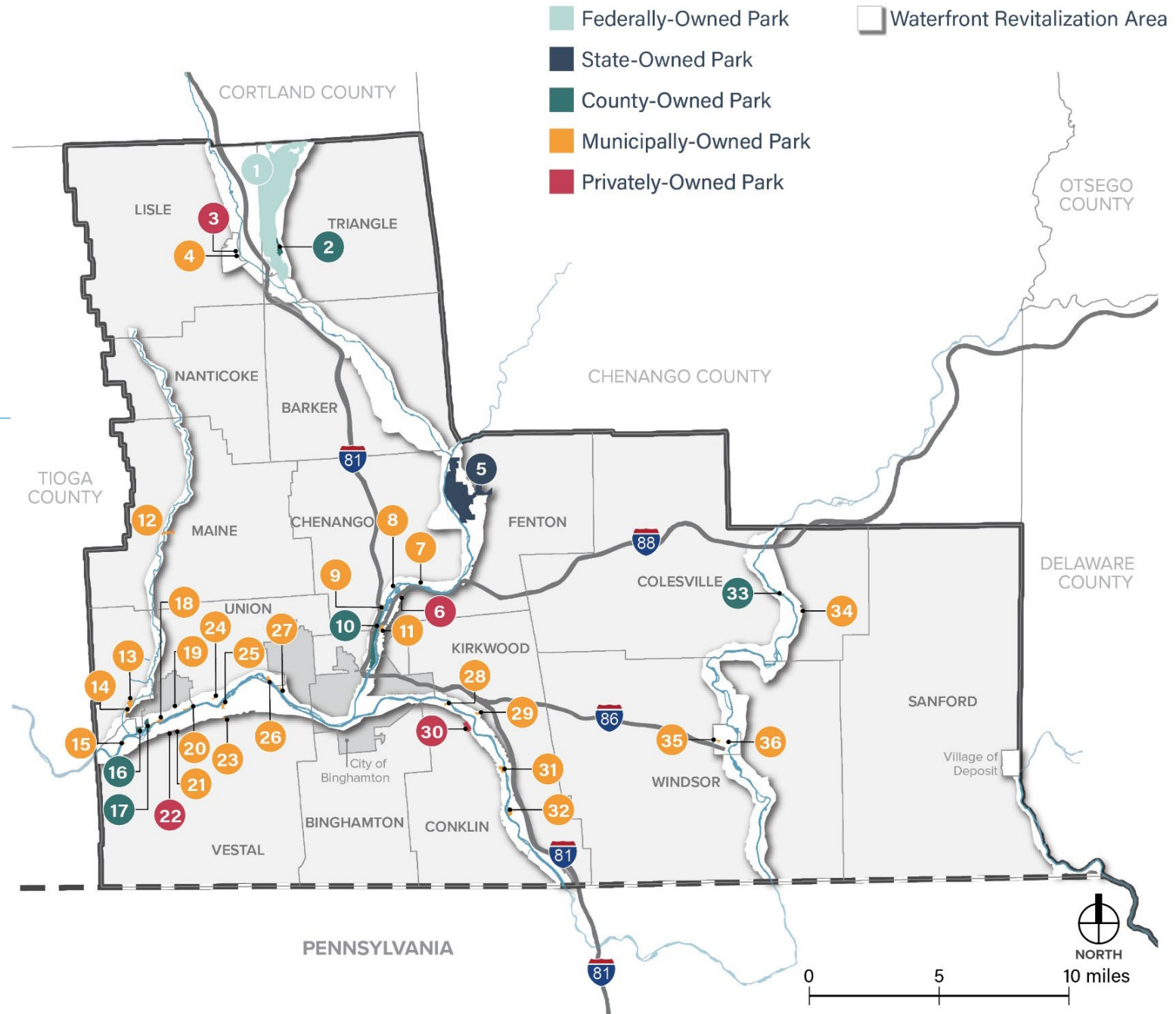


PUBLIC PARKS

4,405 acres (13% of WRA) of
Parkland in the WRA

36 total parks

21 parks with waterfront access



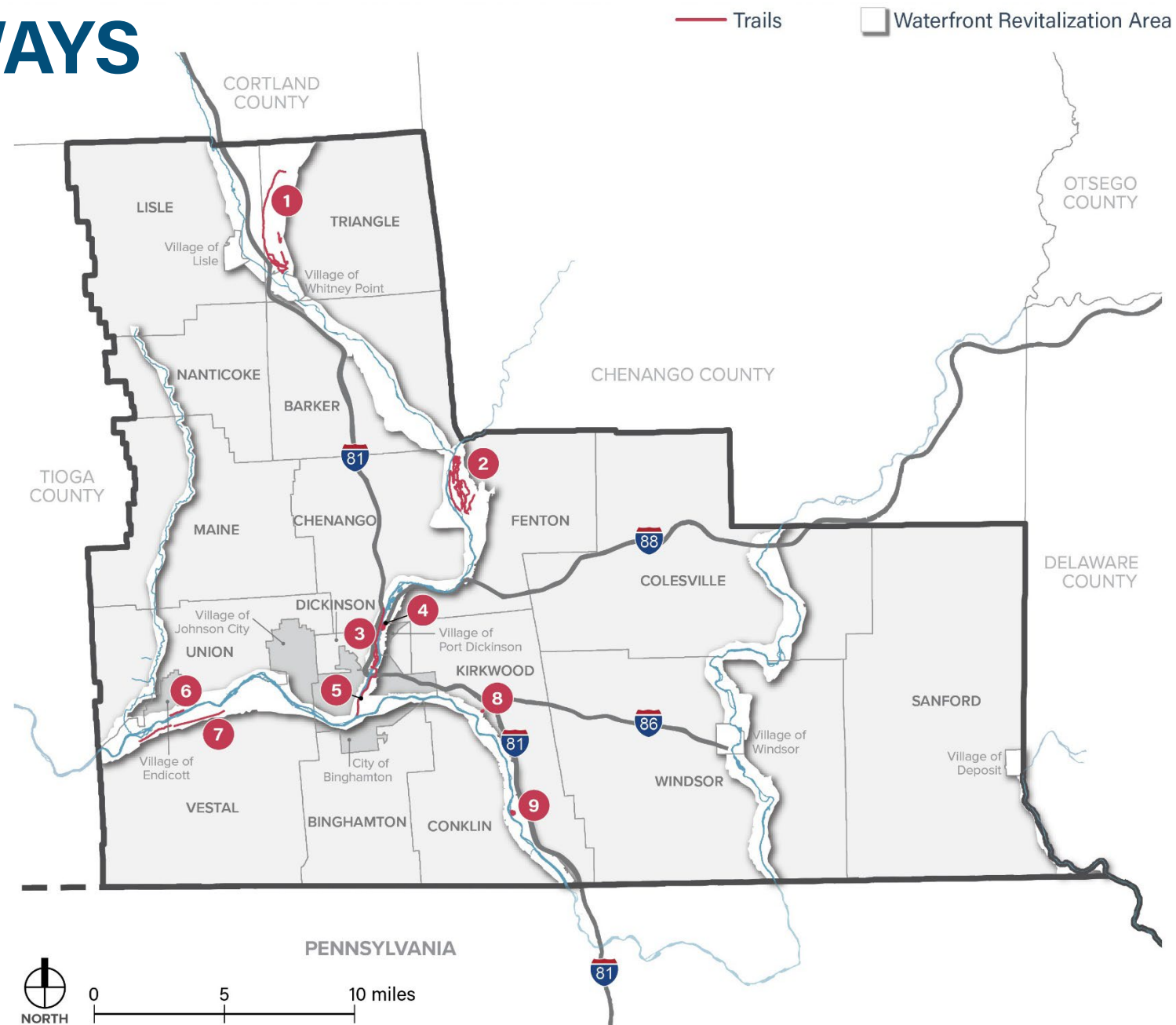
UNIQUE WATERFRONT EXPERIENCES



TRAILS & GREENWAYS

**~35 Miles of Trails/Greenways
in the WRA**

**Typically in Parks and Along
Former Rail Lines**



03 KEY FINDINGS & OPPORTUNITIES

RICH CULTURAL RESOURCES

Haudenosaunee Confederacy

- Oneida Nation
- Onondaga Nation

Susquehanna Heritage Area

14 sites/structures/buildings listed on the National Register

6 State/Local Historic Districts

6 National Register Districts



03 KEY FINDINGS & OPPORTUNITIES

KEY FINDINGS & FOCUS AREA

OPPORTUNITIES

- Diverse landscapes, natural resources, and destinations
- Concentration of water resources
- Rich cultural and historic resources
- Regional connectivity
- Publicly-owned land along waterfront
- Existing and planned trail systems
- Ongoing revitalization of downtowns

CHALLENGES

- Declining population
- Barriers to waterfront access
- Flooding and erosion hazards
- Limited regional, multi-modal transportation options
- Inter-municipal coordination



04

NEXT STEPS



BERGMANN
ARCHITECTS ENGINEERS PLANNERS

PROJECT SCHEDULE

DRAFT LWRP BY FALL 2021

1. Local Commitment & Consultation – **ONGOING**
2. Inventory & Analysis – **COMPLETE**
3. Policies & Programs – **March to June 2021**
4. Local & Regional Projects – **February to June 2021**
5. Implementation Plan – **July to August 2021**



IDENTIFYING PROJECTS

- Inventory & Analysis and Municipal Interviews lay the foundation for project identification
- Diversity of projects tailored to local needs
- Emphasis on waterfront access, regional connectivity, & flood resilience



DEEP DIVE: BROOME BLUEWAY TRAIL PLAN

- County-wide water trail system
- Complements and advances LWRP



PROJECT WEBSITE

Check out the new project website and
contact the project team anytime!

www.broomewaterfront.com



BERGMANN
ARCHITECTS ENGINEERS PLANNERS



05

INTERACTIVE EXERCISE



BERGMANN
ARCHITECTS ENGINEERS PLANNERS

READY TO SHARE SOME FEEDBACK?



www.menti.com



1 Grab your phone

2 Go to
www.menti.com

3 Enter Code:
91 79 09 1